

# INNOVATIVE SYSTEM

# QUICK-FIT CYLINDERS

NZ MEPS COMPLIANT TO AS/NZS-4692.1



## SAVING YOU TIME AND MONEY ON EVERY INSTALL

Our quick-fit cylinder is an innovative cylinder which incorporates a valve bank mounted on the top of the tank.

AVAILABLE IN:

- ▶ DUPLEX STAINLESS
- ▶ VITREOUS ENAMEL
- ▶ FROM 40-300 LITRE CAPACITY

**07 578 9238**

[info@ryanzhotwater.co.nz](mailto:info@ryanzhotwater.co.nz)

70 Courtney Road,  
Parkvale, Tauranga 3112.



# THE 3 IN 1 MONO-BLOC VALVE SYSTEM

The RYANZ quick-fit cylinder is an innovative system that incorporates our 3 in 1 Mono-Bloc valve technology mounted on the top of the tank.

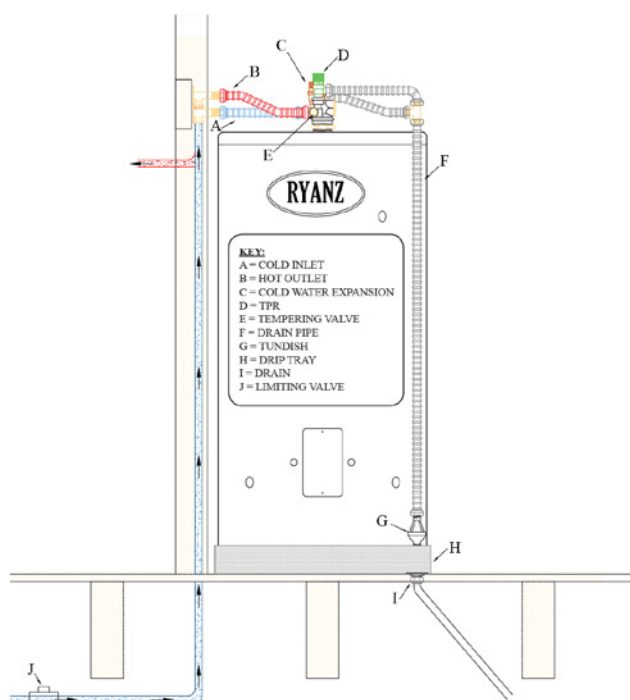
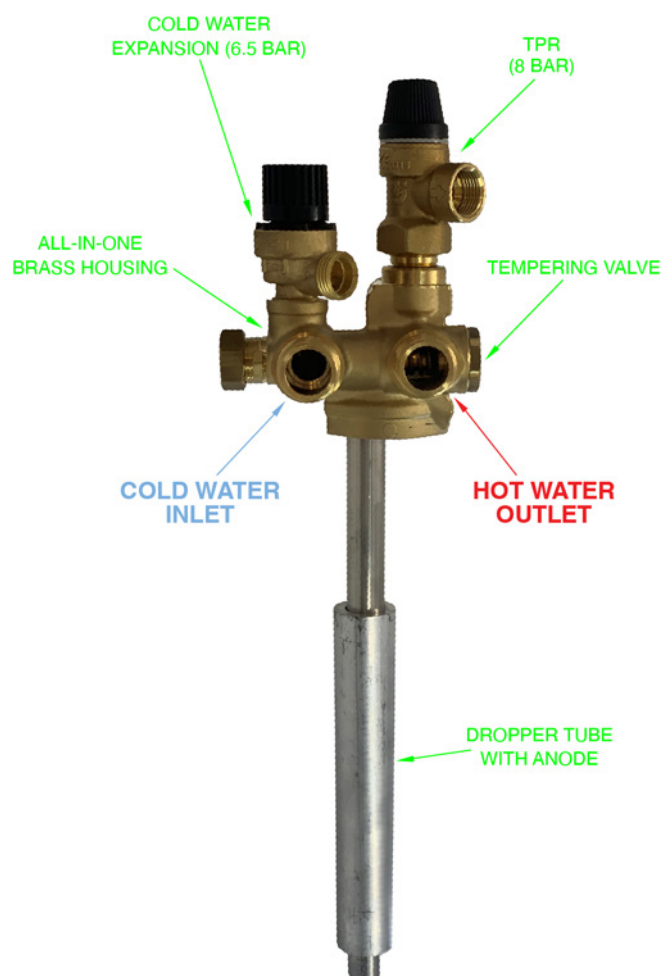
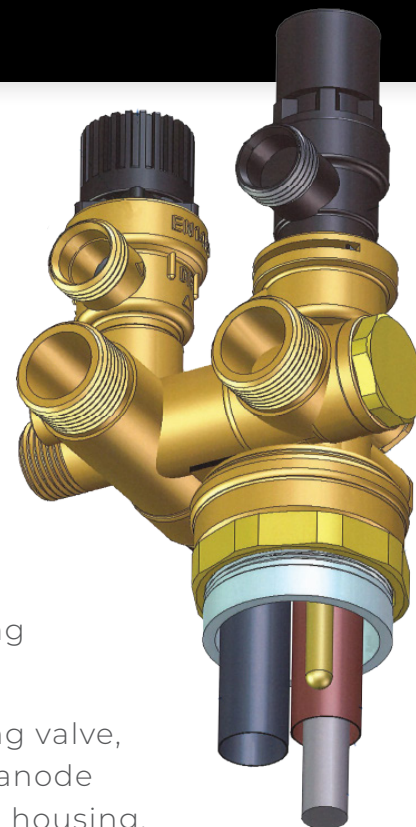
This slick design will save you time in installation, parts and material which saves you money with every install.

The RYANZ cylinder is made from high-quality Duplex Stainless Steel or Vitreous Enamel and is super-insulated using high-density polyurethane.

The RYANZ Mono-Bloc valve system contains a TPR, Tempering valve, Cold-water Expansion, a stainless steel dropper tube with an anode attached to it which are all mounted into a high-quality brass housing. The Mono Bloc system is pre-installed on the top of the cylinder.

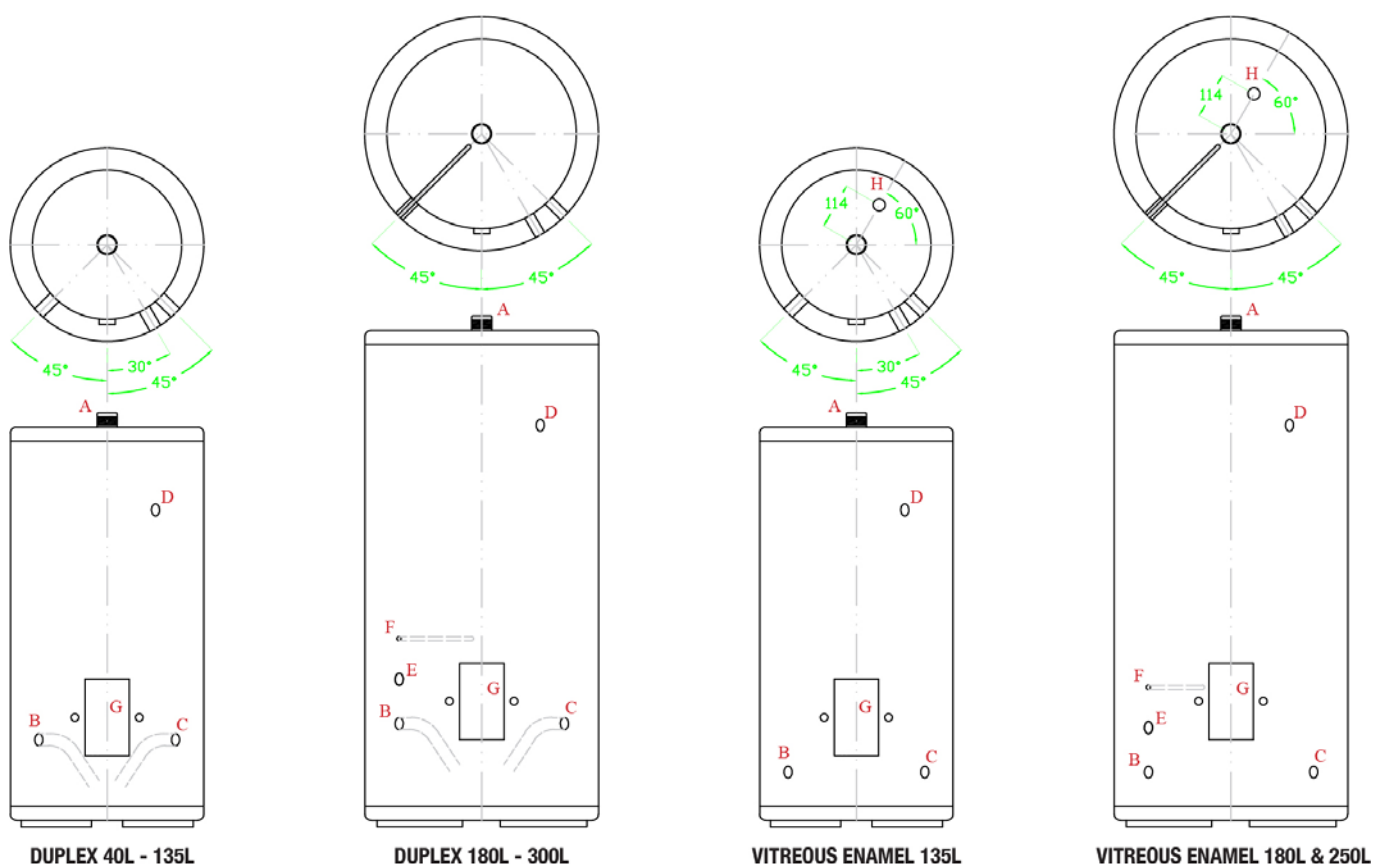
INSTALLATION KIT SOLD SEPARATELY, INCLUDES:

- ▶ DRIP TRAY
- ▶ STAINLESS SINK WASTE
- ▶ DRAIN KIT (HOSES)
- ▶ TUNDISH FITTING
- ▶ RESTRAINT STRAPS
- ▶ STAINLESS HOT & COLD HOSES WITH NUTS AND WASHER



# QUICK-FIT CYLINDERS

Whether it's a new build, renovation or an existing home, the RYANZ hot water system will make a significant difference with their compact size and versatility in the hot water heating market. With multiple sizes available, one of these cylinders is bound to suit your individual needs especially with the option to customize the product, for those one-off builds. RYANZ Cylinders come in an aesthetically pleasing painted case and mounted on rubber feet



| DESCRIPTION         | FITTING         | DUPLEX STAINLESS STEEL |       |       |       |       |       |       | VITREOUS ENAMEL |       |       |
|---------------------|-----------------|------------------------|-------|-------|-------|-------|-------|-------|-----------------|-------|-------|
|                     |                 | 40L                    | 90L   | 135L  | 180L  | 180L  | 250L  | 300L  | 135L            | 180L  | 250L  |
| PART NUMBER         |                 | 25705                  | 25708 | 25712 | 25716 | 25718 | 25725 | 25730 | 25750           | 25760 | 25770 |
| DIAMETER            |                 | 470                    | 470   | 470   | 470   | 560   | 575   | 625   | 542             | 542   | 652   |
| HEIGHT**            |                 | 490                    | 975   | 1385  | 1785  | 1215  | 1625  | 1720  | 1160            | 1460  | 1380  |
| A VALVE FITTING     | SPECIAL         |                        |       |       |       |       |       |       |                 |       |       |
| B DRAIN*            | 3/4" BSP SOCKET | 200                    | 200   | 200   | 200   | 240   | 240   | 235   | 120             | 120   | 126   |
| C DRAIN*            | 3/4" BSP SOCKET | 200                    | 200   | 200   | 200   | 240   | 240   | 235   | 120             | 120   | 126   |
| D UNTEMPERED WATER* | 3/4" BSP SOCKET | 365                    | 770   | 1180  | 1580  | 980   | 1390  | 1485  | 970             | 1270  | 1146  |
| E RETURN*           | 3/4" BSP SOCKET | N/AN                   | /AN   | /A    | 310   | 350   | 350   | 345   | N/A             | 330   | 236   |
| F SENSOR POCKET*    | 1/2" BSP SOCKET | N/AN                   | /AN   | /A    | 410   | 450   | 450   | 445   | N/A             | 430   | 336   |
| G ELEMENT           |                 | 1.5kw                  | 1.5kw | 3kw   | 3kw   | 3kw   | 3kw   | 3kw   | 2.4kw           | 3kw   | 3.6kw |
| H ANODE             |                 | N/AN                   | /AN   | /AN   | /AN   | /AN   | /AN   | /A    | ☑               | ☑     | ☑     |

\*MEASUREMENTS ARE TAKEN FROM BOTTOM OF TANK

\*\*ALLOW APPROX. 200MM AT TOP OF TANK FOR VALVE



**07 578 9238**

[info@ryanzhotwater.co.nz](mailto:info@ryanzhotwater.co.nz)

70 Courtney Road,  
Parkvale, Tauranga 3112.



## **PRODUCTS ALSO AVAILABLE IN THE RYANZ HOT WATER RANGE**

- ▶ **STOCK AND CUSTOM MAINS  
PRESSURE DUPLEX CYLINDERS**
- ▶ **LOW PRESSURE COPPER CYLINDERS**
- ▶ **DAIRY CYLINDERS**
- ▶ **MARINE & MOTORHOME CYLINDERS**
- ▶ **COMMERCIAL CYLINDERS**
- ▶ **OVERSINK & UNDERBENCH BOILERS**